

Aspe



**NITROGEN FERTILIZER  
OF CONTROLLED RELEASE**





# NITROGEN FERTILIZER OF **CONTROLLED RELEASE.** **28-0-0**

**AZOL** is a nitrogen fertilizer of high efficiency and persistence. The N-urea meet immediate needs and the N-formaldehyde ensures progressive availability.  
Safe and environmentally friendly.

Packaging 30kg



## COMPOSITION

%w/v

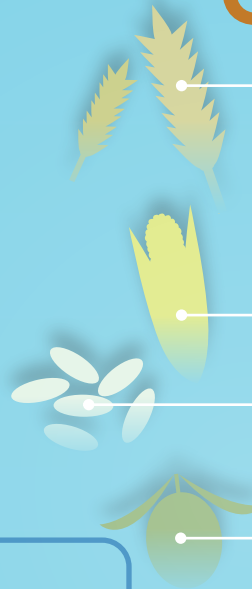
Total Nitrogen (N)	28%
• N (Urea-formaldehido)	85%
• N (Ureico)	15%

Biuret, Max	less than 0,7%
pH(10% water, 20°C)	9-11
Density (20°)	1,23-1,25kg/L

# GENERAL ADVANTAGES

- *PROGRESSIVE RELEASE.*
- *COMPATIBLE WITH PESTICIDES.*
- *FOLIAR APPLICATION.*
- *REDUCE, DRIFT AND IMPROVES THE ABSORPTION.*
- *KEEP VEGETATIVE/PRODUCTIVE BALANCE IN CROPS WHERE (N) HAS DIRECT INFLUENCE ON PRODUCTION.*
- *RISK OF WASHING, MAXIMUM USE OF NITROGEN. ENVIRONMENTALLY FRIENDLY.*

## BENEFITS CROPS



### CEREAL

Specific weight increases  
Increases protein content  
Decreases risk of lodging

### MAIZE

In the early stages homogenized the crops.

### RICE

Increases the specific weight. Largest filled of the spike.

### OLIVE GROVE

Homogenized fruit ripening.  
Greater fruit size.  
Net increase production.



# APPLICATION AND DOSAGE



<b>CROP</b>	<b>DAYS</b>	<b>TIME OR MODE</b>	<b>DOSE</b>
Cotton	n.p.	State of 4 sheets, after flowering and during capsule formation	5-8 l/ha - 6-10 kg/ha
Rice	n.p.	The emergence of the flag leaf	10-15l/ha - 12-19 kg/ha
Cereals	n.p.	1st treatment between full tillering to the first knot. 2nd treatment between flag leaf and flowering	10-25 l/ha - 12-31 kg/ha
Lawn	n.p.	Applications every 50-60 days50-60 días	15-24 l/ha - 19-30 kg/ha
Citrus	n.p.	In December, after fruit set and floral differentiation	5-10 l/ha - 6-12 kg/ha
Citrus	n.p.	End of winter, from vegetative recovery	64-96 l/ha - 80-120 kg/ha fertirrigation
Long strawberries	n.p.	Beginning of flowering and repeat every 15 days	5-10 l/ha - 6-12 kg/ha
Stone fruit	n.p.	Fruit before flowering and repeat every 30 days	5-10 l/ha - 6-12 kg/ha
Stone fruit	n.p.	End of the winter to fruit set	64-96 l/ha - 80-120 kg/ha fertirrigation
Pome fruit	n.p.	Before flowering and repeat every 30 days	5-10 l/ha - 6-12 kg/ha

next page





# APPLICATION AND DOSAGE



<b>CROP</b>	<b>DAYS</b>	<b>TIME OR MODE</b>	<b>DOSE</b>
Pome fruit	n.p.	End of the winter to fruit set	64-96 l/ha - 80-120 kg/ha fertirrigation
Leafy vegetables	n.p.	The formation of the bud and repeat every 14 days	5-8 l/ha - 6-10
Horticultural	n.p.	Before flowering and applications every 10-14 days	5-10 l/ha 6-12 kg/ha
Horticultural	n.p.	At the beginning of the growing season	48-80 l/ha 60-100 kg/ha fertirrigation
	n.p.	Early post-emergence, together with herbicides	10-15 l/ha - 12-19 kg/ha
Corn	n.p.	Acaricide treatment for spider mites	10-15 l/ha - 12-19 kg/ha
Corn	n.p.	Since before flowering and repeat every 30 days	5-10 l/ha - 6-12 kg/ha
Olive	n.p.	End of winter, from vegetative recovery	64-120l/ha - 80-150 kg/ha fertirrigation
Olive	n.p.	State R2-R3	4-8 l/ha - 5-10 kg/ha
Soy	n.p.	Post-flowering	5-10 l/ha - 6-12 kg/ha
Vine		End of winter, from vegetative recovery	48-80 l/ha - 60-100 kg/ha fertirrigation
Vine			



# COUNCIL FOR EMPLOYMENT

It can be mixed with the majority of plant protection products. Do not use mixed with tebuconazole in winter cereal crops at temperatures above 25 ° C. It is not compatible with high acid products or with solutions containing ammonium nitrate. It is advisable to make a premix for compatibility. Fill the tank halfway, pour the required amount of product with the agitator running, add if necessary and apply pesticides below.

## APPLICATION

Avoid temperatures below -5 ° C and above 30 ° C. Use the product within 12 months after purchase.







[www.aspeagro.com](http://www.aspeagro.com)